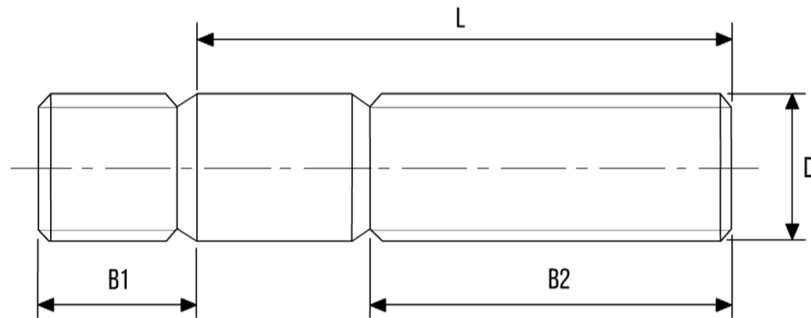


ENGINEER STUDS – DIN939 (METAL END = 1.25xD)



Diameter (D)	Pitch	Metal End 1.25xD (B1)	Nut End (B2)		
			L ≤ 125	L = 125-200	L ≥ 200
M8	1.25	10	22	28	-
M10	1.50	12	26	32	45
M12	1.75	15	30	36	49
M14	2.00	18	34	40	53
M16	2.00	20	38	44	57
M18	2.50	22	42	48	61
M20	2.50	25	46	52	65
M22	2.50	28	50	56	69
M24	3.00	30	54	60	73
M27	3.00	35	60	66	79
M30	3.50	38	66	72	85
M33	3.50	42	72	78	91
M36	4.00	45	78	84	97
M39	4.00	50	84	90	103
M42	4.50	52	90	96	109
M45	4.50	58	98	102	115
M48	5.00	60	102	108	121
M52	5.00	65	110	116	129

- The length (L) is the nominal length of the stud. This is the length given when ordering.
- The overall length of the stud is the nominal length plus the length of the metal end (B1)
- Studs are manufactured to order and can be made in any material.