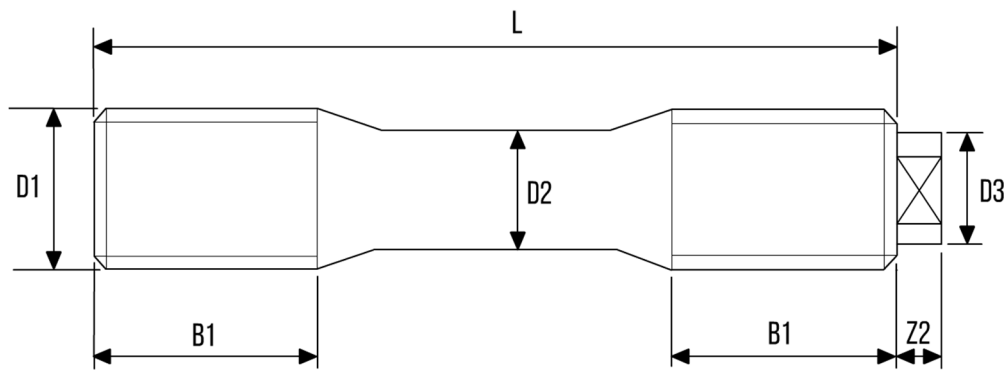


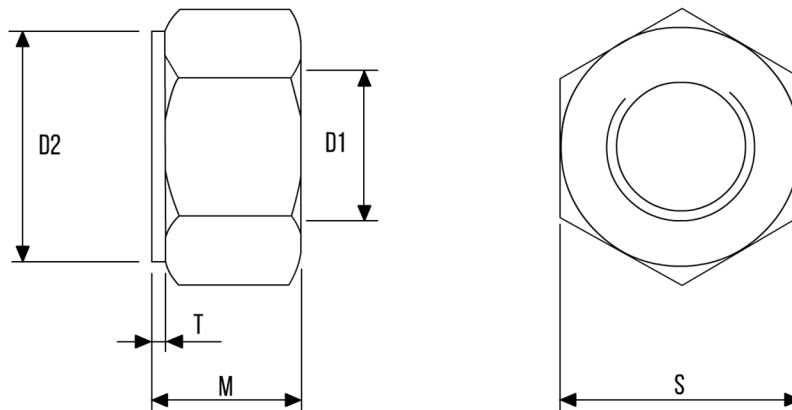
STUDS WITH REDUCED SHANK - DIN2510-L



| D1 (Diameter) | Pitch | D2 | D3 | B1 | Z2 |
|---------------|-------|------|------|------|------|
| M12 | 1.75 | 8.5 | 8.0 | 20.0 | 4.0 |
| M16 | 2.00 | 12.0 | 12.0 | 23.0 | 5.0 |
| M20 | 2.50 | 15.0 | 14.0 | 28.0 | 6.0 |
| M24 | 3.00 | 18.0 | 14.0 | 32.0 | 6.0 |
| M27 | 3.00 | 20.5 | 18.0 | 35.0 | 6.0 |
| M30 | 3.50 | 23.0 | 18.0 | 39.0 | 6.0 |
| M33 | 3.50 | 25.5 | 25.0 | 42.0 | 9.0 |
| M36 | 4.00 | 27.5 | 25.0 | 45.0 | 9.0 |
| M39 | 4.00 | 30.5 | 28.0 | 48.0 | 10.0 |
| M42 | 4.50 | 32.5 | 28.0 | 52.0 | 10.0 |
| M45 | 4.50 | 35.5 | 32.0 | 55.0 | 11.0 |
| M48 | 5.00 | 37.5 | 32.0 | 58.0 | 11.0 |
| M52 | 5.00 | 41.0 | 36.0 | 62.0 | 12.0 |
| M56 | 5.50 | 44.0 | 40.0 | - | 13.0 |

- DIN2510 Studs are manufactured to order and can be made in any material.
- DIN2510 Studs are generally supplied with DIN2510 NF Nuts

STANDARD NUTS - DIN2510-NF



| D1 (Diameter) | Pitch | D2 | M | T | S |
|---------------|-------|------|------|-----|------|
| M12 | 1.75 | 21.0 | 12.0 | 2.0 | 22.0 |
| M16 | 2.00 | 26.0 | 16.0 | 2.0 | 27.0 |
| M20 | 2.50 | 31.0 | 20.0 | 2.0 | 32.0 |
| M24 | 3.00 | 35.0 | 24.0 | 3.0 | 36.0 |
| M27 | 3.00 | 40.0 | 27.0 | 3.0 | 41.0 |
| M30 | 3.50 | 45.0 | 30.0 | 3.0 | 46.0 |
| M33 | 3.50 | 49.0 | 33.0 | 3.0 | 50.0 |
| M36 | 4.00 | 53.5 | 36.0 | 3.0 | 55.0 |
| M39 | 4.00 | 58.5 | 39.0 | 3.0 | 60.0 |
| M42 | 4.50 | 63.5 | 42.0 | 3.0 | 65.0 |
| M45 | 4.50 | 68.5 | 45.0 | 3.0 | 70.0 |
| M48 | 5.00 | 73.5 | 48.0 | 4.0 | 75.0 |
| M52 | 5.00 | 78.5 | 52.0 | 4.0 | 80.0 |
| M56 | 5.50 | 83.5 | 56.0 | 4.0 | 85.0 |

- DIN2510-NF is the standard form of nut to suit DIN2510 studs.
- Some materials are available as standard but other materials are manufactured to suit stud material.