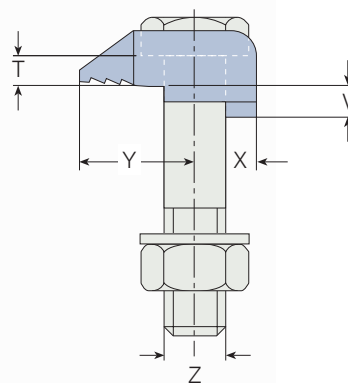
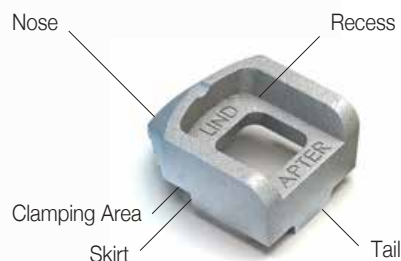
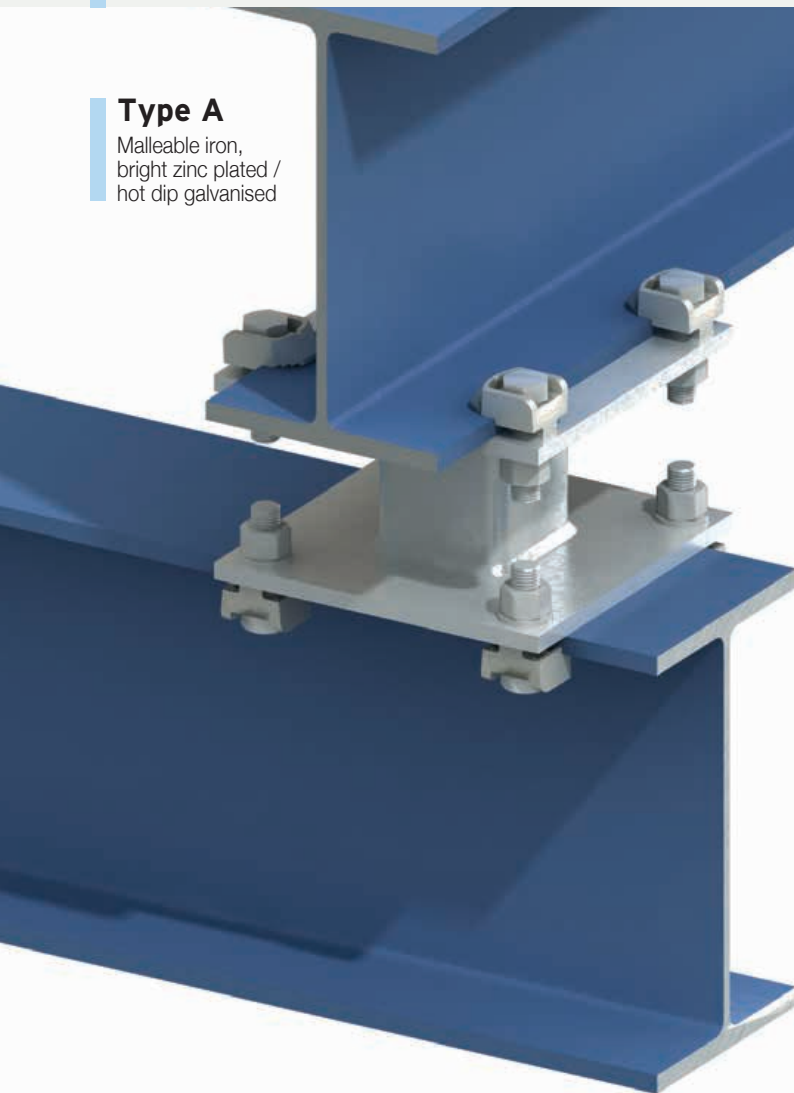
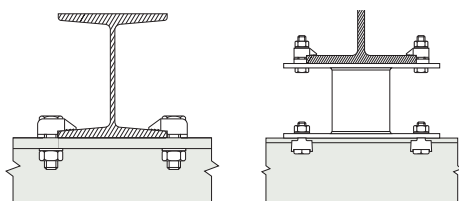


**Type A**

Malleable iron,  
bright zinc plated /  
hot dip galvanised



**Typical Applications** (see also page 34-37)



The recessed top of the Type A clamp holds the bolt head captive while the nut is tightened. The skirt prevents the clamp rotating during installation. The clamp is suitable for parallel flanges, and tapered flanges up to 8° and is installed correctly when the clamping area grips the flange. The tail must be chosen to suit the thickness of the flange being gripped. For correct tail length/packing combinations, please see page 15.

Product Code	Bolt 8.8 Z	Safe Working Loads (5:1 Factor of Safety)		Tightening Torque Nm	Y mm	X mm	Dimensions Tail Length V			T mm	Width mm
		Tensile / 1 Bolt kN	Frictional / 2 Bolts kN				short mm	medium mm	long mm		
A08	M8	1.0	-	6	16	8	-	4	-	4	20
A10	M10	1.5	-	20	20	11	4	5	7	5	26
A12	M12	5.8	0.7	69	26	13	4.5	6	9.5	6	29
A16	M16	7.3	1.5	147	30	16	5.5	8	11	8	36
A20	M20	14.7	3	285	36	19	7	10	12.5	10	46
A24	M24	19.7	4.5	491	48	25	9	12	16	12	55

➤ For higher loads the Type AF should be used (see page 16).

■ Order example: A16 medium HDG