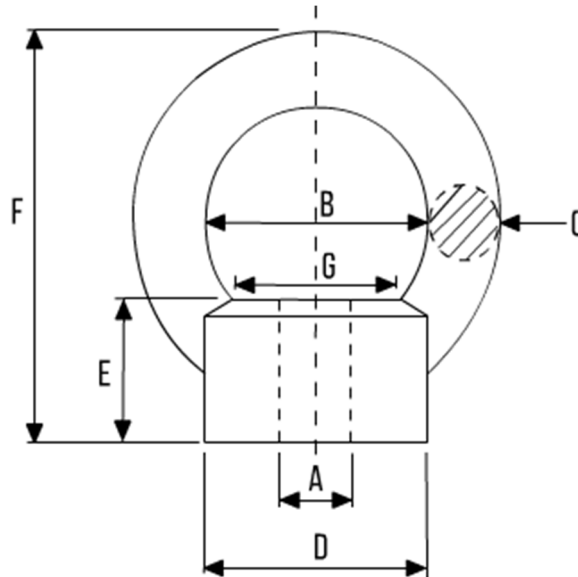


**PIPE SUPPORTS**



**STANDARD EYENUT**



A	A	B	C	D	E	F	H	SWL
M6	1/4"	25	9	22	14	47	16	60 KG
M8	5/16"	25	9	22	14	47	16	95 KG
M10	3/8"	25	9	22	14	47	16	160 KG
M12	1/2"	44	13	29	22	78	23	320 KG
M16	5/8"	44	13	29	22	78	23	630 KG
M18	---	47	16	39	26	84	31	1000 KG
M20	3/4"	47	6	39	26	84	31	1250 KG
M22	7/8"	47	16	39	26	84	31	1600 KG
M24	1"	52	21	44	38	105	36	2000 KG

- Dimensions in millimetres (unless stated)
- Available in Carbon, Alloy & Stainless Steels
- Full range of different finishes available