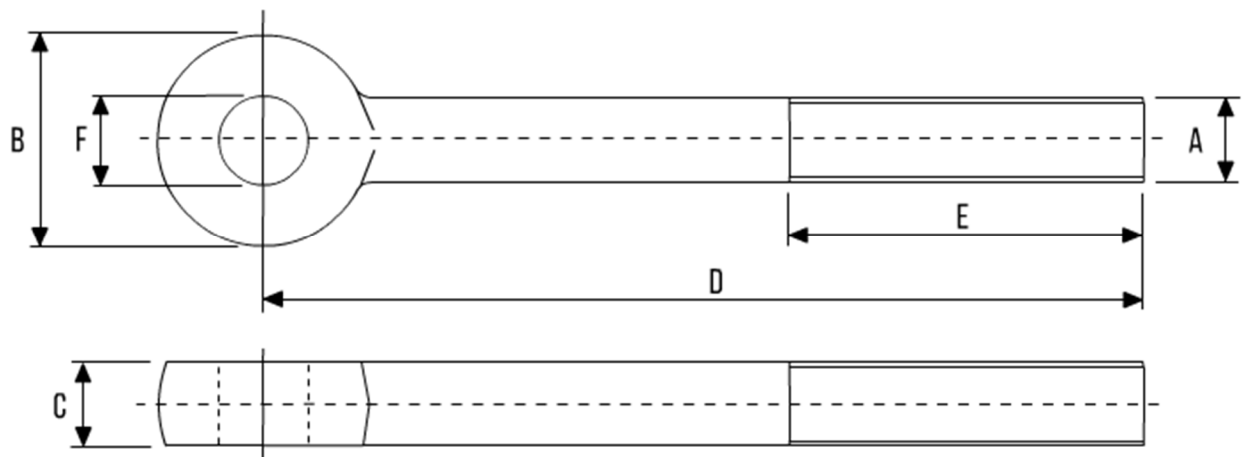


PIPE SUPPORTS



PALM EYEBOLT – STRAIGHT SIDES



A (MM)	A (INCH)	B	C	D (MIN)	D (MAX)	E (MIN)	E (MAX)	F
M8	5/16"	16	8	30	3000	15	1500	8
M10	3/8"	25	10	35	3000	15	1500	10
M12	1/2"	26	13	38	3000	18	1500	13
M12	---	34	12	45	3000	18	1500	12
M16	5/8"	32	16	45	5500	20	2000	16
M16	5/8"	38	16	45	5500	20	2000	16
M20	3/4"	42	20	55	5500	25	2000	20
M20	3/4"	50	20	60	5500	25	2000	20
M24	1"	51	26	65	5500	30	2000	26
M24	---	51	24	65	5500	30	2000	24
M30	1.1/8"	60	30	70	5500	35	2000	30
M33	1.1/4"	70	33	90	5500	40	2000	33
M39	1.1/2"	80	39	95	5500	45	2000	39
M56	2.1/4"	115	56	120	1000	50	800	56
M64	2.1/2"	130	64	140	1000	60	800	64
M72	2.3/4"	150	72	165	1000	75	800	72
M76	3"	150	76	170	1000	85	800	76

*Denotes standard sizes. Shorter lengths available. Longer shanks up to 3000mm also available.

- Dimensions in millimetres (unless stated)
- Available in Carbon, Alloy & Stainless Steels
- Full range of different finishes available