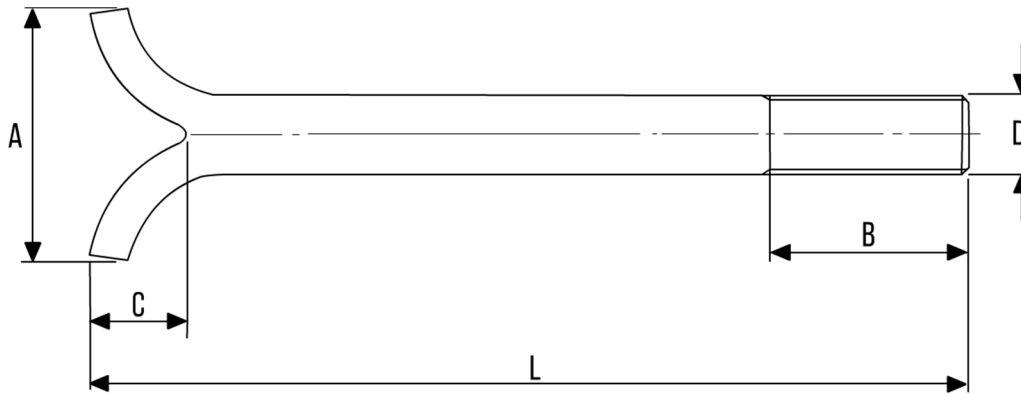


FOUNDATION BOLTING



ANCHOR BOLTS - DIN529C



Diameter	Pitch (Coarse)	A	C
M8	1.25	24	12
M10	1.50	30	15
M12	1.75	36	18
M16	2.00	48	24
M20	2.50	60	30
M24	3.00	75	36
M30	3.50	95	45
M36	4.00	115	54
M42	4.50	135	63
M48	5.00	155	72
M56	5.50	180	84
M64	6.00	200	96
M72	6.00	240	110

- Dimensions in millimetres
- Thread and overall length to suit customer requirements
- Available in carbon, stainless and alloy steels