

# Accessories

R-STUDS

R-ITS

R-BRUSH

R-BLOWPUMP

Plastic and Wire Mesh Sleeves

R-NOZ Mixer Nozzles

R-GUN Dispenser Guns



# R-STUDS Metric Threaded Rods with Hexagonal or Flat Head

Threaded rod with hexagonal or flat head for use with bonded anchors.



Hexagonal Head



Flat Head



## Product overview

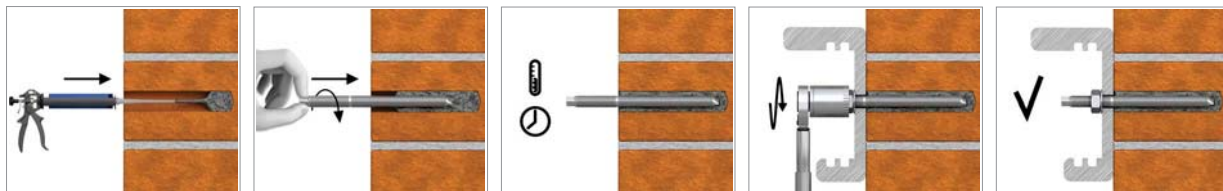
### Features and benefits

- High load-bearing capacities when used with Rawlplug high-performance bonded anchor resins
- Hexagonal head for convenient use with torque wrench
- Flat head for quick manual installation
- A4 stainless steel version for use outdoors and in damp conditions
- Class 8.8 carbon steel version offers improved load-bearing capacities (relative to standard carbon steel)
- Suitable for use with special mesh sleeves in hollow substrates.
- Can be post-installed through fixture in some cases. (Consult technical advisory service)
- Possibility of removal when used with internally threaded socket

### Applications

- Balustrading & handrails
- Supports
- Barriers
- Racking systems
- Consoles
- Railings
- Window elements
- Scaffolding
- Machinery
- Facades
- Copy-eco systems
- Cable trays
- Curtain walling
- Formwork supports
- Heavy machinery
- Lamps
- Safety barriers
- Road Signs
- Railings
- Public seating

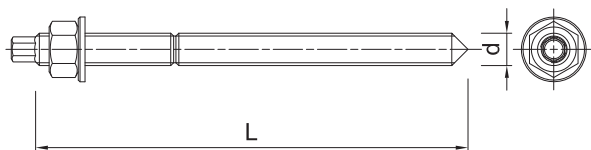
## Installation guide



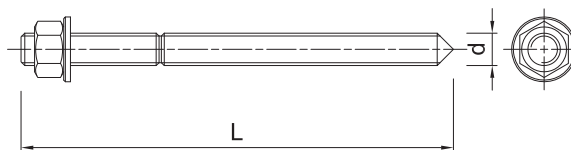
1. Drill hole to the required diameter and depth for stud size being used.
2. Clean the hole thoroughly with hand pump and hole brush
3. If required, insert the mesh sleeve into position
4. Fill hole with the required resin to the recommended fill level. (Follow the relevant instructions for the resin product)
5. Insert the threaded stud slowly and with a slight twisting motion, until the required embedment depth is reached
6. Leave undisturbed until curing time of resin has elapsed
7. Attach fixture and tighten the nut to the required installation torque

## Product information

Hexagonal Head



Flat Head



Size	Product Code	Anchor		Fixture			
		Diameter	Length	Max. thickness			Hole diameter
		d	L	t <sub>fix, min</sub>	t <sub>fix, s</sub>	t <sub>fix, max</sub>	d <sub>f</sub>
		[mm]	[mm]	[mm]	[mm]	[mm]	[mm]
<b>R-STUDS Metric Threaded Rods - Steel Class 5.8</b>							
M8	R-STUDS-08110 / R-STUDS-08110-FL	8	110	40	20	-	9
	R-STUDS-08160 / R-STUDS-08160-FL	8	160	90	70	50	9
M10	R-STUDS-10130 / R-STUDS-10130-FL	10	130	48	28	-	12
	R-STUDS-10170 / R-STUDS-10170-FL	10	170	88	68	38	12
	R-STUDS-10190 -	10	190	108	88	58	12
M12	R-STUDS-12160 / R-STUDS-12160-FL	12	160	65	35	-	14
	R-STUDS-12190 / R-STUDS-12190-FL	12	190	95	65	30	14
	R-STUDS-12220 / R-STUDS-12220-FL	12	220	125	95	60	14
	R-STUDS-12260 / R-STUDS-12260-FL	12	260	165	135	100	14
M16	R-STUDS-12300 -	12	300	205	175	140	14
	R-STUDS-16190 / R-STUDS-16190-FL	16	190	71	46	-	18
	R-STUDS-16220 / R-STUDS-16220-FL	16	220	101	76	11	18
	R-STUDS-16260 / R-STUDS-16260-FL	16	260	141	116	51	18
	R-STUDS-16300 -	16	300	181	156	91	18
M20	R-STUDS-16380 -	16	380	261	236	171	18
	R-STUDS-20260 / R-STUDS-20260-FL	20	260	117	67	-	22
	R-STUDS-20300 / R-STUDS-20300-FL	20	300	157	107	37	22
M24	- R-STUDS-20350-FL	20	350	207	157	87	22
	R-STUDS-24300 / R-STUDS-24300-FL	24	300	132	62	-	26
M30	R-STUDS-30380 / R-STUDS-30380-FL	30	380	181	76	-	32
<b>R-STUDS Metric Threaded Rods - Steel Class 8.8</b>							
M8	R-STUDS-08110-88 -	8	110	40	20	-	9
	R-STUDS-08130-88 -	8	130	48	40	-	9
M10	R-STUDS-10130-88 -	10	130	48	28	-	12
M12	R-STUDS-12160-88 -	12	160	65	35	-	14
M16	R-STUDS-16190-88 -	16	190	71	46	-	18
	R-STUDS-16220-88 -	16	220	101	76	11	18
M20	R-STUDS-20260-88 -	20	260	117	67	-	22
	R-STUDS-20300-88 -	20	300	157	107	37	22
M24	R-STUDS-24300-88 -	24	300	132	62	-	26
M30	R-STUDS-30380-88 -	30	380	181	76	-	32
<b>R-STUDS Metric Threaded Rods - A4</b>							
M8	R-STUDS-08110-A4 / R-STUDS-08110-A4FL	8	110	40	20	-	9
M10	R-STUDS-10130-A4 / R-STUDS-10130-A4FL	10	130	48	28	-	12
	- R-STUDS-10170-A4FL	10	170	88	68	38	12
M12	R-STUDS-12160-A4 / R-STUDS-12160-A4FL	12	160	65	35	-	14
	- R-STUDS-12190-A4FL	12	190	95	65	30	14
	R-STUDS-12220-A4 -	12	220	125	95	60	14

## Product information (cont.)

Size	Product Code	Anchor		Fixture			
		Diameter	Length	Max. thickness			Hole diameter
		d	L	t <sub>fix, min</sub>	t <sub>fix, s</sub>	t <sub>fix, max</sub>	d <sub>f</sub>
		[mm]	[mm]	[mm]	[mm]	[mm]	[mm]
<b>R-STUDS Metric Threaded Rods - A4</b>							
M16	R-STUDS-16190-A4/ R-STUDS-16190-A4FL	16	190	71	46	-	18
	R-STUDS-16260-A4/ R-STUDS-16260-A4FL	16	260	141	116	51	18
M20	R-STUDS-20260-A4/ R-STUDS-20260-A4FL	20	260	117	67	-	22
M24	R-STUDS-24300-A4/ R-STUDS-24300-A4FL	24	300	132	62	-	26
M30	R-STUDS-30380-A4/ R-STUDS-30380-A4FL	30	380	181	76	-	32

## Product commercial data

Size	Product Code	Anchor		Quantity [pcs]			Bar Code
		Diameter [mm]	Length [mm]	Box	Outer	Pallet	
<b>R-STUDS Metric Threaded Rods - Steel Class 5.8 with Hexagonal Head</b>							
M8	R-STUDS-08110	8	110	10	10	4200	5906675127477
	R-STUDS-08160	8	160	10	10	4200	5906675234649
M10	R-STUDS-10130	10	130	10	250	9000	5906675127484
	R-STUDS-10170	10	170	10	10	4200	5906675234663
M12	R-STUDS-12160	12	160	10	120	5400	5906675127491
	R-STUDS-12190	12	190	10	120	5760	5906675234694
	R-STUDS-12220	12	220	10	120	5760	5906675234700
	R-STUDS-12260	12	260	10	10	4200	5906675234717
M16	R-STUDS-12300	12	300	5	125	4500	5906675234731
	R-STUDS-16190	16	190	10	60	3600	5906675130903
	R-STUDS-16220	16	220	10	60	2880	5906675234748
M20	R-STUDS-16260	16	260	10	60	1920	5906675234755
	R-STUDS-20260	20	260	5	40	1584	5906675234786
	R-STUDS-20300	20	300	5	5	870	5906675379463
M24	R-STUDS-24300	24	300	1	1	1000	5906675260433
M30	R-STUDS-30380	30	380	1	4	132	5010445001611
<b>R-STUDS Metric Threaded Rods - Steel Class 5.8 with Flat Head</b>							
M8	R-STUDS-08110-FL	8	110	10	10	4200	5010445001468
	R-STUDS-08160-FL	8	160	10	10	7040	5906675260372
M10	R-STUDS-10130-FL	10	130	10	250	9000	5010445001482
	R-STUDS-10170-FL	10	170	10	10	3780	5906675260389
M12	R-STUDS-12160-FL	12	160	10	100	7200	5010445001512
	R-STUDS-12190-FL	12	190	10	120	5760	5906675262338
	R-STUDS-12220-FL	12	220	10	10	3200	5906675261706
M16	R-STUDS-12260-FL	12	260	10	10	1100	5906675260396
	R-STUDS-16190-FL	16	190	10	60	3840	5010445001550
	R-STUDS-16220-FL	16	220	10	10	1920	5906675260402
M20	R-STUDS-16260-FL	16	260	10	10	1920	5906675260419
	R-STUDS-20260-FL	20	260	6	36	1728	5010445001598
	R-STUDS-20300-FL	20	300	5	5	1040	5906675262468
M24	R-STUDS-20350-FL	20	350	10	10	960	5906675234793
M24	R-STUDS-24300-FL	24	300	1	1	770	5906675240794
M30	R-STUDS-30380-FL	30	380	10	10	132	5906675234816

\* Made to order

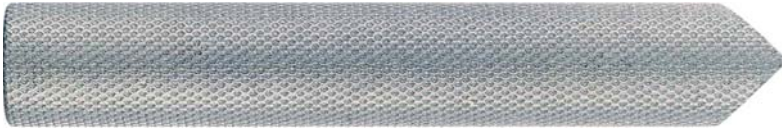
## Product commercial data (cont.)

Size	Product Code	Anchor		Quantity [pcs]			Bar Code
		Diameter [mm]	Length [mm]	Box	Outer	Pallet	
<b>R-STUDS Metric Threaded Rods - Steel Class 8.8 with Hexagonal Head</b>							
M8	R-STUDS-08110-88	8	110	10	10	*	5906675076171
	R-STUDS-08130-88	8	130	10	10	*	5906675083902
M10	R-STUDS-10130-88	10	130	10	250	*	5906675076188
	R-STUDS-10190-88	10	190	10	120	*	5906675089225
M12	R-STUDS-12160-88	12	160	10	120	*	5906675076195
M16	R-STUDS-16190-88	16	190	10	60	*	5906675076201
	R-STUDS-16220-88	16	220	10	60	*	5906675060514
M20	R-STUDS-20260-88	20	260	5	40	*	5906675076218
	R-STUDS-20300-88	20	300	5	40	*	5906675085562
M24	R-STUDS-24300-88	24	300	1	1	*	5906675076225
M30	R-STUDS-30380-88	30	380	1	1	*	5906675076232
<b>R-STUDS Metric Threaded Rods - A4 with Hexagonal Head</b>							
M8	R-STUDS-08110-A4	8	110	10	10	4200	5010445001642
M10	R-STUDS-10130-A4	10	130	10	10	900	5906675234823
M12	R-STUDS-12160-A4	12	160	10	120	5760	5906675234830
	R-STUDS-12220-A4	12	220	10	10	5760	5906675089416
M16	R-STUDS-16190-A4	16	190	10	10	4200	5906675234847
	R-STUDS-16260-A4	16	260	10	60	1920	5906675089249
M20	R-STUDS-20260-A4	20	260	5	5	1584	5906675234854
M24	R-STUDS-24300-A4	24	300	1	1	1000	5906675089263
M30	R-STUDS-30380-A4	30	380	1	4	132	5906675089263
<b>R-STUDS Metric Threaded Rods - A4 with Flat Head</b>							
M8	R-STUDS-08110-A4FL	8	110	10	10	4200	5906675260440
M10	R-STUDS-10130-A4FL	10	130	10	10	9600	5906675260457
	R-STUDS-10170-A4FL	10	170	10	10	4800	5906675261409
M12	R-STUDS-12160-A4FL	12	160	10	10	1800	5906675260464
	R-STUDS-12190-A4FL	12	190	10	10	5760	5906675261393
M16	R-STUDS-16190-A4FL	16	190	10	10	960	5906675260471
	R-STUDS-16260-A4FL	16	260	10	10	1920	5906675089256
M24	R-STUDS-24300-A4FL	24	300	1	1	770	5906675260495
M30	R-STUDS-30380-A4FL	30	380	10	10	132	5906675089287

\* Made to order

# R-ITS Internally Threaded Sockets

Internally threaded socket for the attachment of suitable bolt or threaded rod.



## Product overview

### Features and benefits

- Allows removal of bolt to leave a re-usable socket in place
- High load-bearing capacity
- Close edge and spacing distances
- Expansion free functioning
- Available in zinc plated and stainless steel versions

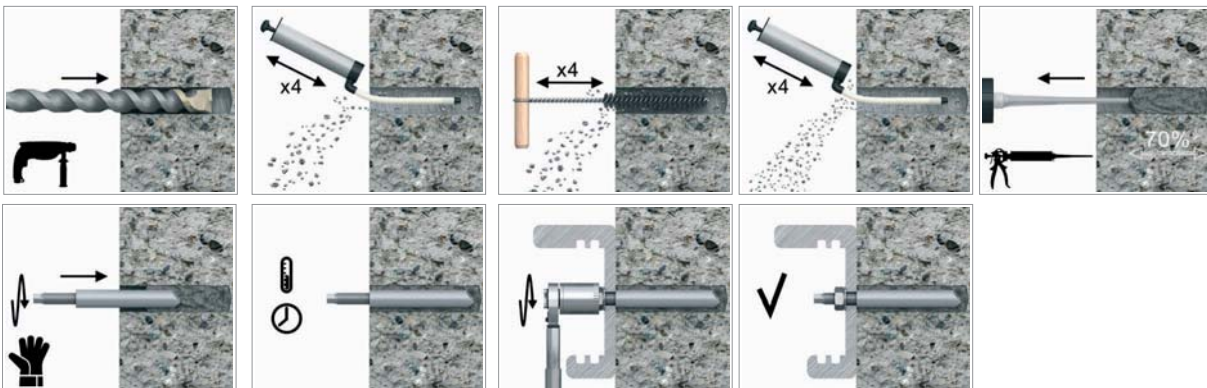
### Applications

- For fastening of threaded rods or bolts
- Safety barriers
- Temporary works/formworks support systems

### Base materials

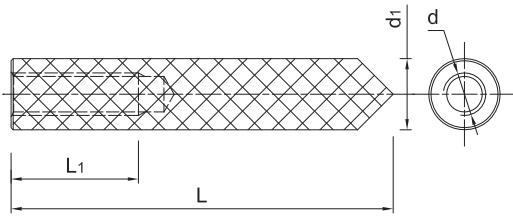
- Approved for use in:
- Non-cracked concrete C20/25-C50/60

## Installation guide



1. After injecting resin, immediately insert the socket anchor, slowly and with a slight twisting motion until flush with surface
2. Remove excess resin, then leave anchorage undisturbed until curing time has elapsed

## Product information



Size	Product Code	Anchor			Fixture
		Diameter	Length	Internal thread length	Hole diameter
		$d_1$	L	$L_1$	$d_f$
		[mm]	[mm]	[mm]	[mm]
<b>R-ITS-Z</b>					
M6	R-ITS-Z-06075	10	75	24	7
M8	R-ITS-Z-08075	12	75	25	9
	R-ITS-Z-08090	12	90	25	9
M10	R-ITS-Z-10075	16	75	30	12
	R-ITS-Z-10100	16	100	30	12
M12	R-ITS-A4-12100	16	100	35	14
M16	R-ITS-A4-16125	24	125	50	18
<b>R-ITS-A4</b>					
M6	R-ITS-A4-06075	11	75	24	7
M8	R-ITS-A4-08075	12.5	75	25	9
	R-ITS-A4-08090	12.5	90	25	9
M10	R-ITS-A4-10075	16.5	75	30	12
	R-ITS-A4-10100	16.5	100	30	12
M12	R-ITS-A4-12100	18	100	35	14
M16	R-ITS-A4-16125	22	125	50	18

## Product commercial data

	Product Code	Anchor		Quantity [pcs]			Weight [kg]			Bar Code
		Diameter	Length	Box	Outer	Pallet	Box	Outer	Pallet	
<b>R-ITS-Z</b>										
M6	R-ITS-Z-06075	11	75	10	10	5600	0.40	0.40	254.00	5010445606205
M8	R-ITS-Z-08075	12.5	75	10	10	5600	0.65	0.65	394.00	5906675087719
	R-ITS-Z-08090	12.5	90	10	10	5600	0.65	0.65	394.00	5010445606236
M10	R-ITS-Z-10075	16.5	75	10	10	5600	0.77	0.77	461.20	5010445606243
	R-ITS-Z-10100	16.5	100	10	10	3360	1.50	1.50	534.00	5010445606267
M12	R-ITS-Z-12100	18	100	6	6	2016	0.69	0.69	261.84	5906675087726
M16	R-ITS-Z-16125	22	125	6	6	2016	2.0	2.0	699.31	5906675087733
<b>R-ITS-A4</b>										
M6	R-ITS-A4-06075	11	75	10	10	5600	0.40	0.40	254.00	5906675087740
M8	R-ITS-A4-08075	12.5	75	10	10	5600	0.62	0.62	394.00	5906675087757
	R-ITS-A4-08090	12.5	90	10	10	5600	0.62	0.62	394.00	5906675087764
M10	R-ITS-A4-10075	16.5	75	10	10	5600	1.29	1.29	461.20	5010445609893
	R-ITS-A4-10100	16.5	100	10	10	3360	1.04	1.04	534.00	5010445609923
M12	R-ITS-A4-12100	18	100	6	6	2016	1.92	1.92	261.84	5010445609930
M16	R-ITS-A4-16125	22	125	6	6	2016	2.62	2.62	699.31	5906675087771

## R-BRUSH Manual Wire Brushes

Brush accessory for cleaning out holes prior to anchor installation



Product Code	Drill diameter [mm]	Quantity [pcs]			Weight [kg]			Bar Code
		Box	Outer	Pallet	Box	Outer	Pallet	
R-BRUSH-M08/M	M8	1	10	300	0.10	1.01	60.3	5906675249759
R-BRUSH-M10/M	M10	1	10	500	0.10	1.01	80.6	5906675249766
R-BRUSH-M12/M	M12	1	10	500	0.10	1.01	80.6	5906675249773
R-BRUSH-M16/M	M16	1	10	400	0.10	1.01	70.5	5906675249780
R-BRUSH-M20/M	M20	1	10	250	0.10	1.01	55.3	5906675249797
R-BRUSH-M24/M	M24	1	10	250	0.10	1.01	55.3	5906675249803
R-BRUSH-M30/M	M30	1	10	300	0.10	1.01	60.3	5906675249810

## R-BLOWPUMP Blow Pump

Manual blow pump ideal for cleaning dust from drilled holes prior to applying bonded anchors or installing mechanical anchors



Product Code	Quantity [pcs]	Weight [kg]		Bar Code	Art No.
		Box	Outer		
R-BLOW PUMP	1	12.0	12.0	5906675102412	55025

### Installation guide for brushes and blow pump

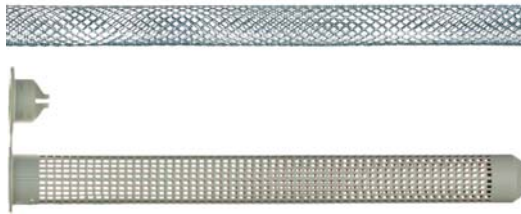


1. Before inserting anchor, clear debris from hole
2. Insert pipe to bottom of hole and pump air repeatedly four times
3. Additional use of hole brush is recommended, four times



# Plastic and Wire Mesh Sleeves

Mesh sleeves for for reduced mortar consumption and optimal mechanical interlock



## Product overview

### Features and benefits

- Plastic version ensures the anchor rod is properly centered
- Reduces consumption of resin
- User-friendly installation in hollow substrates
- Wire mesh must be cut to suit required hole depth
- Hole cleaning is not necessary

### Applications

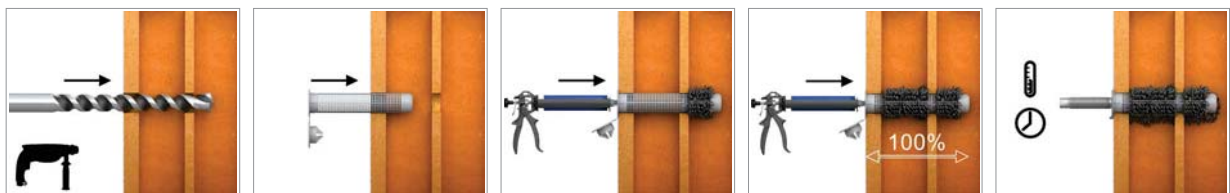
- For use with R-STUDS threaded rods in hollow base materials

### Base materials

#### Approved for use in:

- Hollow Brick
- Hollow Lightweight Concrete Block
- Hollow Sand-lime Brick
- Hollow-core Slab

## Installation guide



1. Simply insert the sleeve into pre-drilled hole before injection of the resin.

## Product commercial data

Product Code	Size		Quantity [pcs]			Weight [kg]			Bar Code
	Sleeve [mm]	Stud	Box	Outer	Pallet	Box	Outer	Pallet	
R-PLS-12050-10	12x50	M6-M8	10	10	480	0.06	0.06	32.9	5906675377520
R-PLS-15085-10	15x85	M8-M10	10	10	6000	0.06	0.06	66.0	5906675291840
R-PLS-15125-10	15x125	M8-M10	10	10	6000	0.08	0.08	78.0	5906675291857
R-PLS-20085-10	20x85	M12-M16	10	10	4800	0.08	0.08	68.4	5906675291864
SP-CE-R08	10x1000	M6-M8	10	10	-	0,129	0,129	-	5906675266138
SP-CE-R10	12x1000	M8	10	10	-	0,129	0,129	-	5906675610122
SP-CE-R12	16x1000	M10	10	10	-	0,129	0,129	-	5906675610320
SP-CE-R16	22x1000	M12	6	6	-	0,129	0,129	-	5906675610528
SP-CE-R20	28x1000	M16	5	5	-	0,258	0,258	-	5906675610726

## R-NOZ Mixer Nozzles

Static mixer for bonded anchors in cartridges and CFS+ system



### Product overview

#### Features and benefits

- Convenient extrusion and mixing of resin and hardener
- Available with or without hanger
- Ideal for serial applications: rebar or anchoring
- One nozzle fits all cartridge delivery systems for bonded anchors, except R-KEX and R-KER
- Specially dedicated nozzles for epoxy and vinylester resins
- Possibility to attach an extension SP-CE-ED-1m extension nozzle

#### Installation guide



1. Simply screw the mixer nozzle onto the resin cartridge (after removing cap) or CFS+ system
2. Before inserting nozzle to the hole inject resin until even colour is obtained
3. Insert mixing nozzle to the far end of the hole and inject resin, slowly withdrawing the nozzle

#### Product commercial data

Product Code	Suitable for	Quantity [pcs]		Weight [kg]		Bar Code
		Box	Outer	Box	Outer	
R-NOZ-10	R-KEM-II, R-KF2, R-KER (all except the epoxy mix)	10	200	0.01	0.01	5906675127460
R-NOZ-100/100	R-KEM-II, R-KF2, R-KER (all except the epoxy mix)	100	800	0.008	0.008	5010445606427
R-NOZ-KEX-II-10	R-KEX-II	10	100	0.01	0.01	5906675078373
R-NOZ-KEX-II-100	R-KEX-II	100	1000	0.008	0.008	5906675078380
R-NOZ-RKEX-10	R-KEX, R-KEM-II, R-KF2, R-KER (product not suitable for epoxy resin)	10	100	0.10	0.10	5906675018089
SP-CE-ED-1M	Extension for every nozzle type	10	10	0.002	0.002	5906675601120

# R-GUN Dispenser Guns

Professional manual dispensing system for resin anchors in cartridges

R-GUN 175-310 ml



## Applications

- Dispenser gun suitable for: 175ml, 280ml, 300ml, 310ml cartridges

Product Code	Description	Quantity [pcs]			Weight [kg]			Bar Code
		Box	Outer	Pallet	Box	Outer	Pallet	
R-GUN-300-N	300 ml CARTRIDGE GUN for R-KEM+, R-KEM II	1	12	960	1.0	12.0	987.1	5906675280141

R-GUN 345 ml



## Applications

- Dispenser gun suitable for: 345ml cartridges

Product Code	Description	Quantity [pcs]			Weight [kg]			Bar Code
		Box	Outer	Pallet	Box	Outer	Pallet	
R-GUN-345-N	345 ml CARTRIDGE GUN for R-KER	1	12	300	1.0	12.0	329.1	5906675280158

R-GUN 380 ml



## Applications

- Dispenser gun suitable for: 380ml cartridges

Product Code	Description	Quantity [pcs]			Weight [kg]			Bar Code
		Box	Outer	Pallet	Box	Outer	Pallet	
R-GUN-380-N	380 ml CARTRIDGE GUN for R-KF2, R-KER	1	12	180	1.03	12.4	215.4	5906675280165

## R-GUN Dispenser Guns

Professional manual dispensing system for resin anchors in cartridges

R-GUN 385 ml



### Applications

- Dispenser gun suitable for: 385 ml cartridges

Product Code	Description	Quantity [pcs]			Weight [kg]			Bar Code
		Box	Outer	Pallet	Box	Outer	Pallet	
R-GUN-385-N	385 ml CARTRIDGE GUN for R-KEX II	1	10	150	1.41	14.1	241.5	5906675067971

R-GUN 400 ml



### Applications

- Dispenser gun suitable for: 400 ml cartridges

Product Code	Description	Quantity [pcs]			Weight [kg]			Bar Code
		Box	Outer	Pallet	Box	Outer	Pallet	
R-GUN-400-N	400 ml CARTRIDGE GUN for R-KEX	1	1	80	1.25	1.25	130.0	5906675290218

## R-GUN Pneumatic Dispenser Guns

Professional pneumatic dispensing system for resin anchors in cartridges

R-GUN 380 ml



### Applications

- Pneumatic dispenser gun suitable for: 380 ml cartridges

Product Code	Description	Quantity [pcs]			Weight [kg]			Bar Code
		Box	Outer	Pallet	Box	Outer	Pallet	
R-GUN-380-PNEU	380 ml CARTRIDGE PNEUMATIC GUN for R-KF2, R-KER	1	1	584	1.30	1.30	789.2	5906675286068

## R-GUN Pneumatic Dispenser Guns

Professional pneumatic dispensing system for resin anchors in cartridges

R-GUN 400 ml



### Applications

- Pneumatic dispenser gun suitable for: 400 ml cartridges

Product Code	Description	Quantity [pcs]			Weight [kg]			Bar Code
		Box	Outer	Pallet	Box	Outer	Pallet	
R-GUN-400-PNEU	400 ml CARTRIDGE PNEUMATIC GUN for R-KEX	1	1	609	1.25	1.25	791.3	5906675286457

## R-GUN Dispenser Gun CFS+

Professional dispensing system for resin anchors in CFS+ foils

R-CFS+-GUN 300 ml



### Applications

- Dispenser gun suitable for: 300 ml CFS+ system

Product Code	Description	Quantity [pcs]			Weight [kg]			Bar Code
		Box	Outer	Pallet	Box	Outer	Pallet	
R-CFS+-GUN	300 ml CARTRIDGE GUN for RV200, RM50 & RP30	1	12	180	1.00	12.0	210.0	5906675239804

## R-GUN Pneumatic Dispenser Gun CFS+

Professional pneumatic dispensing system for resin anchors in CFS+ foils

R-CFS+-GUN 300/600 ml



### Applications

- Pneumatic dispenser gun suitable for: 300/600 ml CFS+ system

Product Code	Description	Quantity [pcs]			Weight [kg]			Bar Code
		Box	Outer	Pallet	Box	Outer	Pallet	
R-CFS+-GUN-PNEU	300/600 ml CARTRIDGE GUN RV200, RM50, RP30	1	1	599	1.23	1.23	766.8	5906675288772