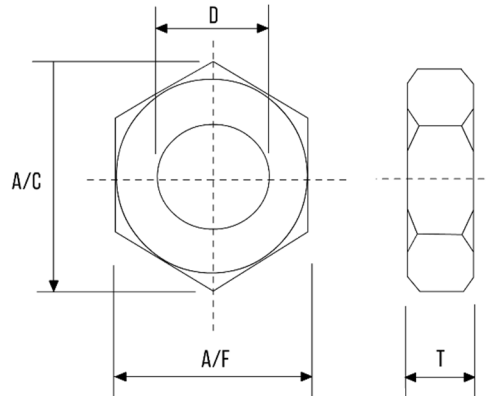


HEX LOCK NUT (METRIC) - DIN 439-2 / ISO 4035



DIA	TPI	A/C MIN	THICKNESS (T)		A/F	
	(COARSE)		MIN	MAX	MIN	MAX
M6	1.00	10.89	2.90	3.20	9.78	10.00
M8	1.25	14.20	3.70	4.00	12.73	13.00
M10	1.50	18.90	4.70	5.00	16.73	17.00
M12	1.75	21.10	5.70	6.00	18.67	19.00
M14	2.00	24.49	6.42	7.00	20.67	21.0
M16	2.00	26.75	7.42	8.00	23.67	24.00
M18	2.50	29.56	8.42	9.00	26.16	27.00
M20	2.50	32.95	9.10	10.00	29.16	30.00
M22	2.50	35.03	9.90	11.00	31.00	32.00
M24	3.00	39.55	10.90	12.00	35.00	36.00
M27	3.00	45.20	12.40	13.50	40.00	41.00
M30	3.50	50.85	13.90	15.00	45.00	46.00
M33	3.50	55.37	15.40	16.50	49.00	50.00
M36	4.00	60.79	16.90	18.00	53.80	55.00
M39	4.00	66.44	18.20	19.50	58.80	60.00
M42	4.50	71.30	19.70	21.00	63.10	65.00
M45	4.50	76.95	21.20	22.50	68.10	70.00
M48	5.00	82.60	22.70	24.00	73.10	75.00
M52	5.00	88.25	24.70	26.00	78.10	80.00
M56	5.50	18.90	4.70	5.00	16.73	17.00

- Dimensions in millimetres
- Available in Mild Steel and A2 & A4 Stainless Steel
- Other materials manufactured on request