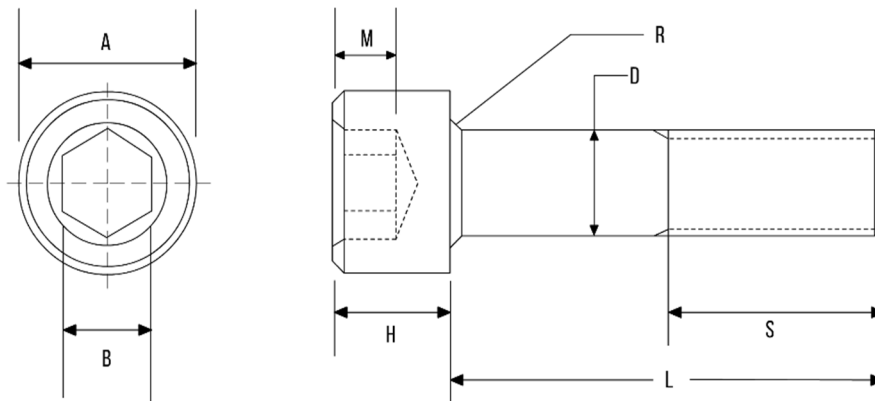


**SOCKET HEAD CAPSCREWS (METRIC) - DIN 912 / ISO 4762**



DIA	A	H	B	M (MIN)	S (MIN)	R (MIN)
M3	5.32 - 5.68	2.86 - 3.00	2.520 - 2.580	1.30	18.00	0.10
M4	6.78 - 7.22	3.82 - 4.00	3.020 - 3.080	2.00	20.00	0.20
M5	8.28 - 8.72	4.82 - 5.00	4.020 - 4.095	2.50	22.00	0.20
M6	9.78 - 10.22	5.70 - 6.00	5.020 - 5.140	3.00	24.00	0.25
M8	12.73 - 13.27	7.64 - 8.00	6.020 - 6.140	4.00	28.00	0.40
M10	15.73 - 16.27	9.64 - 10.00	8.025 - 8.175	5.00	32.00	0.40
M12	17.73 - 18.27	11.57 - 12.00	10.025 - 10.175	6.00	36.00	0.60
M14	20.67 - 21.33	13.57 - 14.00	12.032 - 12.212	7.00	40.00	0.60
M16	23.67 - 24.33	15.57 - 16.00	14.032 - 14.212	8.00	44.00	0.60
M18	26.67 - 27.33	17.57 - 18.00	14.032 - 14.212	9.00	48.00	0.60
M20	29.67 - 30.33	19.48 - 20.00	17.050 - 17.230	10.00	52.00	0.80
M22	32.61 - 33.39	21.48 - 22.00	17.050 - 17.230	11.00	56.00	0.80
M24	35.61 - 33.39	23.48 - 24.00	19.065 - 19.275	12.00	60.00	0.80
M27	39.61 - 40.39	26.48 - 27.00	19.065 - 19.275	13.50	66.00	1.00
M30	44.61 - 45.39	29.48 - 30.00	22.065 - 22.275	15.50	72.00	1.00
M33	49.61 - 50.39	32.38 - 33.00	24.065 - 24.275	18.00	76.00	1.00
M36	53.54 - 54.46	35.38 - 36.00	27.065 - 27.275	19.00	84.00	1.00
M39	57.54 - 58.46	38.38 - 39.00	27.065 - 27.275	21.00	90.00	1.00

- Dimensions in millimetres
- Available in Grades 8.8, 10.9 & 12.9 Steel and A2 & A4 Stainless Steel
- Other materials manufactured on request