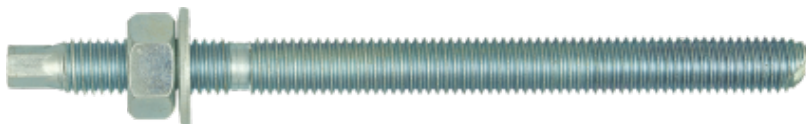


R-STUDS Metric Threaded Rods - Steel Class 5.8

Threaded rod with hexagonal head made of carbon steel class 5.8 for use with bonded anchors.



Product information

Features and benefits

- High load-bearing capacities when used with Rawlplug high-performance bonded anchor resins
- Suitable for use with special mesh sleeves in hollow substrates.
- Can be post-installed through fixture in some cases. (Consult technical advisory service)
- Hexagonal head for convenient use with torque wrench
- Possibility of removal when used with internally threaded socket

Applications

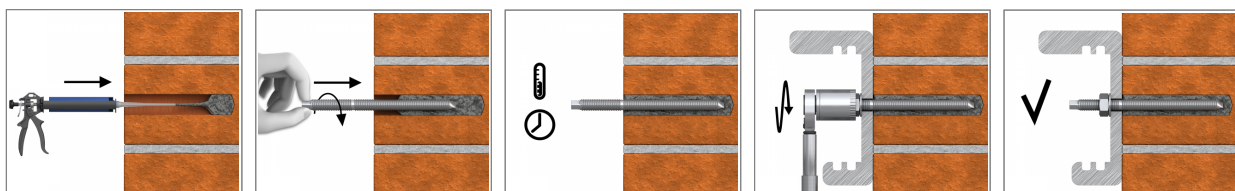
- Balustrading & handrails
- Supports
- Barriers
- Racking systems
- Consoles
- Railings
- Window elements
- Scaffolding
- Heavy machinery
- Facades
- Copy-eco systems
- Cable trays
- Curtain walling
- Formwork support systems
- Lamps
- Safety barriers
- Road Signs

Base materials

Approved for use in:

- Cracked concrete C20/25-C50/60
- Non-cracked concrete C20/25-C50/60
- Solid Concrete Block
- Lightweight Concrete Block
- Hollow Brick
- Hollow-core Slab
- Hollow Sand-lime Brick
- Hollow Lightweight Concrete Block
- Aerated Concrete Block
- Natural Stone

Installation guide



Product information

1. Drill hole to the required diameter and depth for stud size being used.
2. Clean the hole thoroughly with hand pump and hole brush
3. If required, insert the mesh sleeve into position
4. Fill hole with the required resin to the recommended fill level. (Follow the relevant instructions for the resin product)
5. Insert the threaded stud slowly and with a slight twisting motion, until the required embedment depth is reached
6. Leave undisturbed until curing time of resin has elapsed
7. Attach fixture and tighten the nut to the required installation torque

Size	Product Code		Diameter	Length	Max. thickness	Max. thickness	Max. thickness	Hole diameter	Max. thickness
			[mm]	[mm]	[mm]	[mm]	[mm]	[mm]	[mm]
M8	R-STUDS-08110	Steel class 5.8	8	110	40	20		9	20
	R-STUDS-08160			160	90	70	50		70
M10	R-STUDS-10130		10	130	48	28		12	33
	R-STUDS-10170			170	88	68	38		73
	R-STUDS-10190			190	108	88	58		93
M12	R-STUDS-12160		12	160	65	35		14	50
	R-STUDS-12190			190	95	65	30		80
	R-STUDS-12220			220	125	95	60		110
	R-STUDS-12260			260	165	135	100		150
M16	R-STUDS-16190		16	190	71	46		18	66
	R-STUDS-16220			220	101	76	11		96
	R-STUDS-16260			260	141	116	51		136
	R-STUDS-16300			300	181	156	91		176
M20	R-STUDS-20380		20	380	261	236	171	22	256
	R-STUDS-20260			260	117	67			
	R-STUDS-20300			300	157	107	37		
	R-STUDS-20350	350		207	157	87			
M24	R-STUDS-24300	24	300	132	62		26		
M30	R-STUDS-30380	30	380	181	106		32		

Product commercial data

Size	Product Code	Anchor		Quantity [pcs]			Weight [kg]			Bar Codes
		Diameter [mm]	Length [mm]	Box	Outer	Pallet	Box	Outer	Pallet	
M8	R-STUDS-08110	8	110	10	500	4200	0.43	21.6	211.4	5906675127477
	R-STUDS-08160	8	160	10	10	4200	0.40	0.40	198.0	5906675234649
M10	R-STUDS-10130	10	130	10	300	9000	0.77	23.1	723.9	5906675127484
	R-STUDS-10170	10	170	10	10	4200	0.40	0.40	198.0	5906675234663
	R-STUDS-10190	10	190	10	250	9000	0.77	19.3	723.0	5906675234670
M12	R-STUDS-12160	12	160	10	120	5400	2.3	27.1	1250.4	5906675127491
	R-STUDS-12190	12	190	10	120	5760	1.50	18.0	894.0	5906675234694
	R-STUDS-12220	12	220	10	120	5760	1.50	18.0	894.0	5906675234700
	R-STUDS-12260	12	260	10	10	4200	0.40	0.40	198.0	5906675234717

Product commercial data

Size	Product Code	Anchor		Quantity [pcs]			Weight [kg]			Bar Codes
		Diameter [mm]	Length [mm]	Box	Outer	Pallet	Box	Outer	Pallet	
M12	R-STUDS-12300	12	300	5	125	4500	0.77	19.3	723.0	5906675234731
M16	R-STUDS-16190	16	190	10	60	3600	2.5	15.0	930.0	5906675130903
	R-STUDS-16220	16	220	10	60	2880	3.0	18.0	894.0	5906675234748
	R-STUDS-16260	16	260	10	60	1920	3.5	21.0	702.0	5906675234755
	R-STUDS-16300	16	300	5	5	1450	2.2	2.2	657.9	5906675234762
	R-STUDS-16380	16	380	1	40	1300	0.57	23.0	776.5	5906675234779
M20	R-STUDS-20260	20	260	5	40	1584	3.0	23.6	964.6	5906675234786
	R-STUDS-20300	20	300	5	5	870	3.4	3.4	612.9	5906675379463
	R-STUDS-20350	20	350	2	2		1.57	1.57		5906675324883
M24	R-STUDS-24300	24	300	1	1	1000	0.97	0.97	1004.0	5906675260433
M30	R-STUDS-30380	30	380	1	4	132	5.9	23.4	802.2	5010445001611