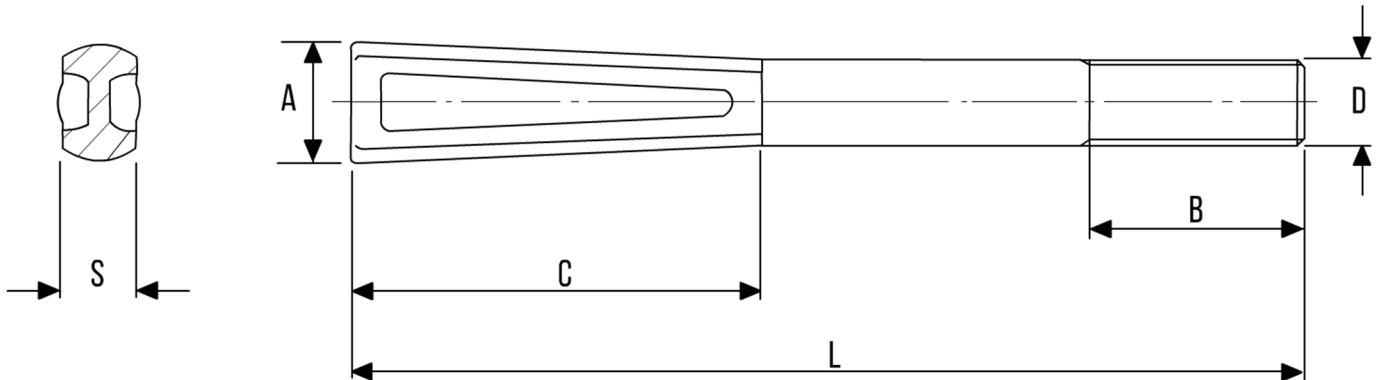


FOUNDATION BOLTING



ANCHOR BOLTS - DIN529F



Diameter	Pitch (Coarse)	A	C	S
M8	1.25	14	50	6
M10	1.50	16	50	8
M12	1.75	20	55	10
M16	2.00	25	85	14
M20	2.50	30	95	18
M24	3.00	35	120	22
M30	3.50	45	130	26
M36	4.00	55	190	30
M42	4.50	65	200	36
M48	5.00	75	220	42

- Dimensions in millimetres
- Thread and overall length to suit customer requirements
- Available in carbon, stainless and alloy steels