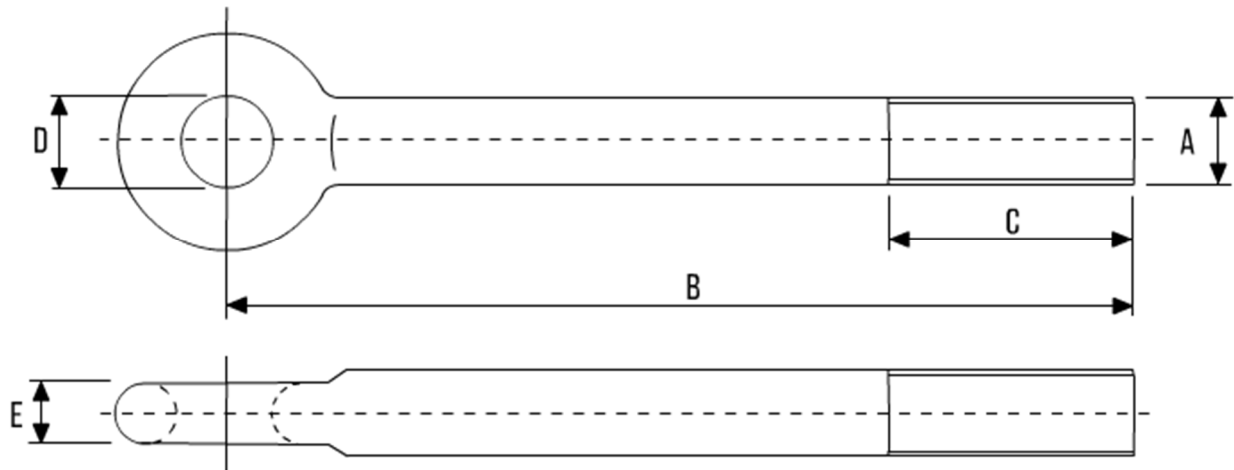


PIPE SUPPORTS



SLING ROD EYEBOLT – INTEGRAL FORGED EYE BS3974



A	B*	C*	D	E	SWL
M8	300	200	14	6	230 KG
M10	300	200	16	7	360 KG
M12	300	200	18	9	530 KG
M16	300	200	22	12	1010 KG
M20	300	200	26	14	1580 KG
M24	300	200	30	17	2280 KG
M30	300	200	36	21	3650 KG
M36	300	200	42	26	5340 KG
M42	300	200	48	30	7400 KG

*Denotes standard sizes. Shorter lengths available. Longer shanks up to 3000mm also available.

- All dimensions in millimetres
- Available in Carbon, Alloy & Stainless Steels
- Full range of different finishes available